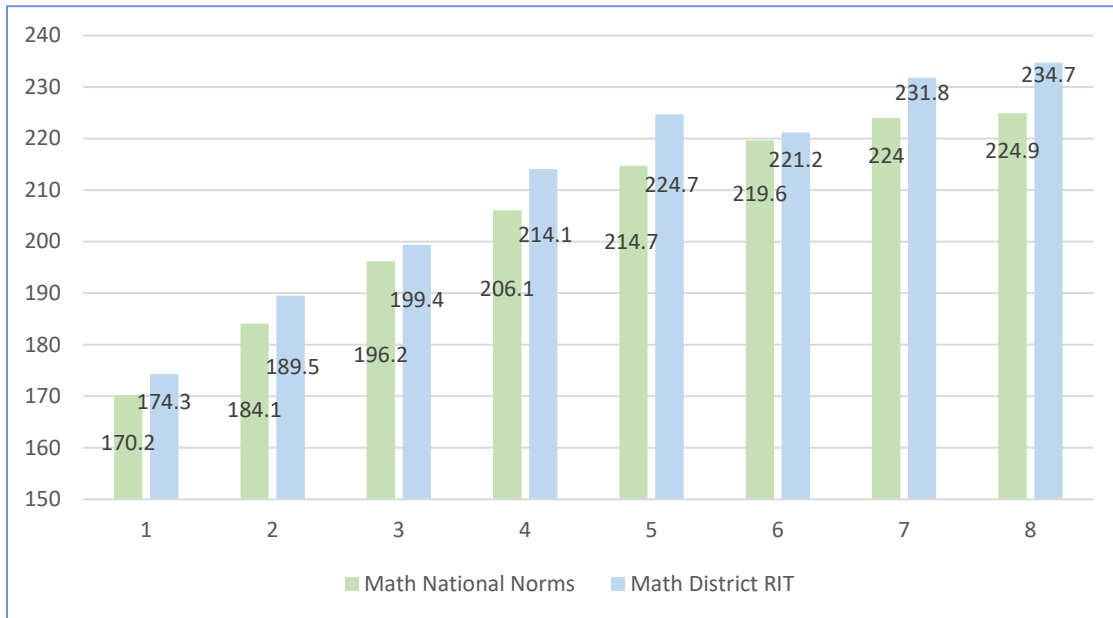
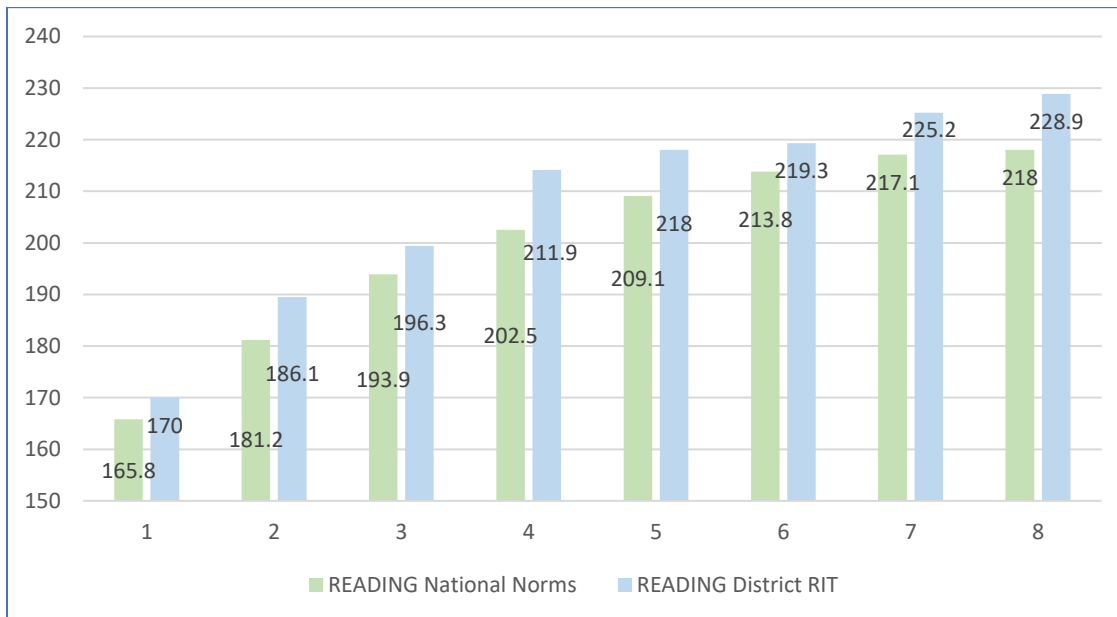


Student Growth Comparison to National Norms Cass School District 63

Mathematics Growth – 2023 NWEA MAP



Reading Growth – 2023 NWEA MAP



Cass School District 63 uses the NWEA MAP (Northwest Evaluation Association Measure of Academic Progress) to assess and monitor the growth of our students in reading and math, while comparing our students RIT (Rausch UnIT, an equal-interval measurement scale developed to simplify the interpretation of test scores) to national norms. While it is good to know that our students have consistently scored above the national norm in every grade level in recent years, the most important use of the data is identify areas of need, target professional development, use the discussions to inform instruction, establish student growth goals, and analyze the patterns to improve student achievement.

Note – Cass SD 63 scores are from winter 2022, with the exception of 8th grade which are Fall 2022.